

Летшач

ГРАЂЕВИНСКО ПРЕДУЗЕЋЕ
CONSTRUCTION COMPANY



Industrijske hale | industrial facilities

GORENJE	08-11
MK GROUP	12-15
AGRO MARKET	16-17
FERTICO	18-19
CTP	20-21
SAVACOOP	22-23
ALBON	24-25
PVF TRADERS	26-27
GEZE	28-29
LE BELIER	30-31
IREKS	32-33
IGB AUTOMOTIVE	34-35

CABLEX	36-37
MECAFOR	38-39
JUB	40-41
MÜHLBAUER	42-43
MITAS, GATARIĆ	44-45
DELHAIZE	46-47
COOPER STANDARD	48-49
FASHION OUTLET PARK	50-51
HOLLO COMPANY	52-53
BIOENERGO 808	54-55
IND. HALE INDUSTRIAL FACILITIES	56-57
EKOLOŠKI PROJEKTI ECO PROJECTS	58-59



CILJ AIM

Stalan rad na usavršavanju tehnologije radova, obuci zaposlenih i primeni novih, savremenih materijala.

Continuous efforts towards enhancing the work technology, on-the-job training and utilizing new, cutting-edge materials.

SVRHA PURPOSE

Zadovoljstvo svakog investitora.

Satisfaction of each individual investor.

OBEĆANJE COMMITMENT

Sve naše obaveze ispunićemo u dogovorenim rokovima.

We will fulfill all our obligations within the stipulated deadlines.

ISTRAJNOST PERSISTENCE

Vredno radimo
i kreativno mislimo,
pratimo viziju klijenta!

We work hard and think
creatively, following
the client's vision!

POVERENJE TRUST

Klijenti prepoznaju našu pouzdanost i posvećenost i time otvaramo vrata dugoročnoj saradnji.

Clients recognize our reliability, which enables us to establish long-term cooperation.



ANALIZA ANALYSIS

Efikasnoj organizaciji radova na gradilištu prethodi detaljna analiza projekata.

Efficient organization of works at a construction site is preceded by a detailed analysis of projects.



Sa ponosom ističemo da smo za kompaniju **GORENJE** izvodili radove na svim njihovim proizvodnim i distributivnim kompleksima u Srbiji.

We proudly highlight the fact that we have executed works for the company **GORENJE** at all their production and distribution facilities in Serbia.



GORENJE VALJEVO

objekat | facility: 25.000 m²

godina | year of construction: 2012/13

gorenje



Rekonstrukcija postojećih i dogradnja novog objekta u okviru kompleksa **GORENJE TIKI** u Staroj Pazovi.

Reconstruction of the existing and construction of a new facility within the **GORENJE TIKI** complex in Stara Pazova.



GORENJE S. PAZOVA

objekat | facility: 18.000 m²

godina | year of construction: 2010





Uspešnu saradnju započeli smo sa kompanijom **MK GROUP** na izgradnji skladišnog objekta u Makišu, a nastavili na modernoj ULO hladnjači u Krčedinu.

We initiated a successful cooperation with the company **MK GROUP** on the construction of a storage facility in Makiš, and our cooperation continued during the construction of a modern ULO cold storage in Krčedin.



MK GROUP KRČEDIN

objekat | facility: 10.000 m²

godina | year of construction: 2018



Skadišni objekat **MK BEORENT** u Makišu.

Storage facility **MK BEORENT** in Makiš.



MK GROUP MAKIŠ

objekat | facility: 10.000 m²

godina | year of construction: 2015



Objekti koje smo izgradili za kompaniju **AGROMARKET**, predstavljali su nam svojevrsan izazov u pogledu zahtevanih rokova. Prvo je izgrađen logistički centar, a zatim i objekat za proizvodnju folijarnih đubriva.

Facilities which we constructed for the company **AGROMARKET** posed a challenge of sorts, in terms of requested deadlines. We initially constructed the logistics center, followed by the facility for production of foliar fertilizers.



AGROMARKET INĐIJA

objekat | facility: 15.000 m²
godina | year of construction: 2018

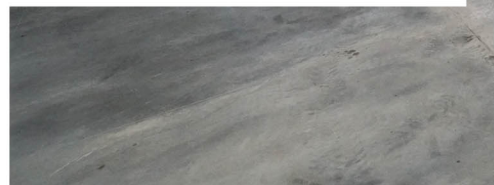
Villager®



FERTICO INĐIJA

objekat | facility: 6.300 m²
godina | year of construction: 2019

fertico



Uspešnu saradnju smo imali i sa kompanijom **CTP** koja se nalazi u samom vrhu evropskih firmi koje se bave izdavanjem raznih vrsta poslovnih objekata.

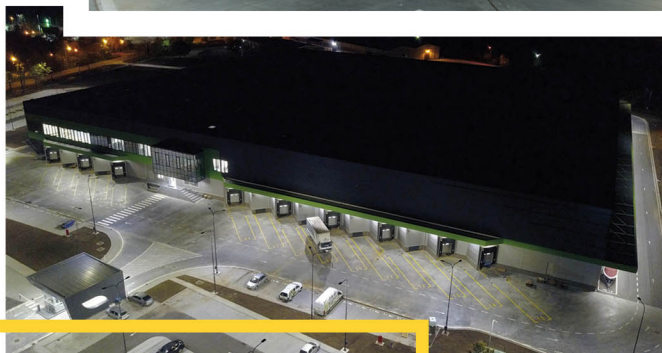
We also successfully cooperated with the company **CTP** one of the top European companies in the field of leasing various types of business facilities.



CTP ŠIMANOVCI

objekat | facility: 14.000 m²

godina | year of construction: 2019



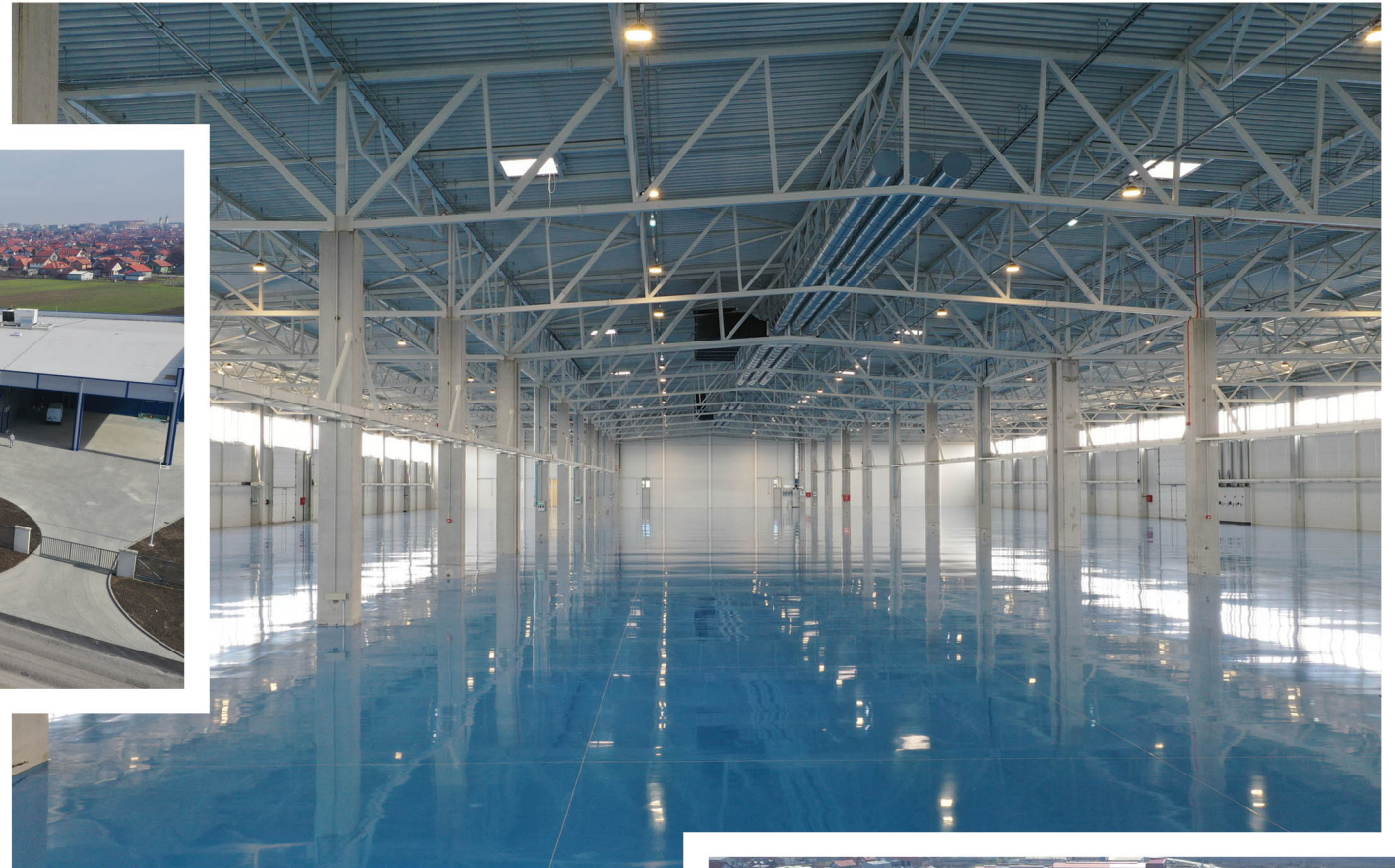
Za kompaniju **SAVACOOP** smo izgradili jedan od najmodernijih logističkih centara.

We have constructed one of the most modern logistics centers for the company **SAVACOOP**.



SAVACOOOP NOVI SAD

objekat | facility: 24.100 m²
godina | year of construction: 2020



Dugoročnu saradnju imamo i sa kompanijom **ALBON**. Objekat za proizvodnju delova za auto industriju je izgrađen 2020. godine, a pre toga smo uspešno izveli proširenje postojećeg proizvodnog objekta.

We have established long-term cooperation with the company **ALBON**. The facility for manufacturing parts for the automotive industry was constructed in 2020, and prior to that, we successfully expanded the existing manufacture facility.



ALBON RUMA

objekat | facility: 11.170 m²
godina | year of construction: 2020



Objekat sa upečatljivim rešenjima u administrativnom delu smo izgradili za kompaniju **P.V.F. TRADERS**.

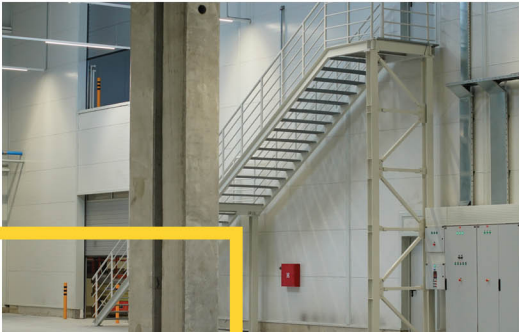
Facility with exceptional solutions in administration section has been built for **P.V.F. TRADERS**.



P.V.F. TRADERS ŠIMANOVCI

objekat | facility: 6.400m²
godina | year of construction: 2020





Kompanija **GEZE** je još jedna u nizu sa kojom imamo prijatnu i uspešnu višegodišnju saradnju. Pored ostalog, izdvojili bismo proširenje njihovog proizvodno-skladišnog objekta u Zrenjaninu.

GEZE is another company with which we have had a successful and satisfactory cooperation for several years. Among other projects, we would like to highlight the expansion of their production and storage facility in Zrenjanin.



GEZE ZRENJANIN

objekat | facility: 6.200 m²
godina | year of construction: 2019



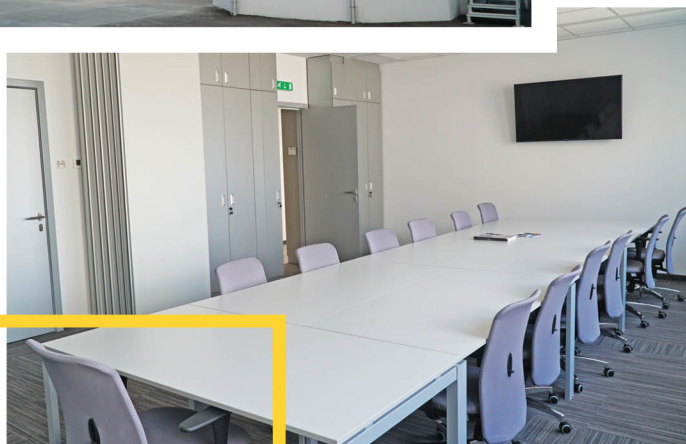
Za kompaniju **LE BEILER** izgradili smo novi proizvodni objekat u okviru njihovog proizvodnog centra u Kikindi.

We have constructed a new production facility for the company **LE BEILER**, within their production center in Kikinda.

LE BELIER KIKINDA

objekat | facility: 2.800 m²
godina | year of construction: 2017





Za kompaniju **IREKS**, koji je deo nemačke kompanije **Ireks GMBH** izgradili smo skladišni i proizvodno-poslovni objekat u Staroj Pazovi.

We have constructed a storage, production and business facility in Stara Pazova for the company **IREKS**, part of the German company **Ireks GMBH**.



IREKS S. PAZOVA

objekat | facility: 1.800 m²

godina | year of construction: 2018





Izgradnja proizvodnog objekta za nemačku kompaniju **IGB** je još jedna značajna referenca na polju proizvodnih objekata za auto industriju.

Construction of a production facility for the German company **IGB** represents another significant achievement in the field of constructing production facilities for automotive industry.



IGB AUTOMOTIVE INĐIJA

objekat | facility: 7.000 m²
godina | year of construction: 2016



Izgradnjom poslovnog objekta u Platičevu, započeli smo saradnju sa slovenačkom kompanijom **CABLEX**.

We have initiated cooperation with the Slovenian company **CABLEX** by constructing a business facility in Platičevo.



CABLEX PLATIČEVO

objekat | facility: 5.200 m²
godina | year of construction: 2019



Zadovoljstvo da saradujemo sa francuskom kompanijom **MECAFOR** smo imali na izgradnji obe faze njihovog proizvodnog kompleksa u Kikindi.

We have had the pleasure of cooperating with the French company **MECAFOR** during both stages of the construction of their production complex in Kikinda.

MECAFOR KIKINDA

FAZA 1 | PHASE 1

objekat | facility: 5.000 m²

godina | year of construction: 2016

FAZA 2 | PHASE 2

objekat | facility: 2.900 m²

godina | year of construction: 2020





Za kompaniju **JUB** u Šimanovcima smo izgradili proizvodno-poslovni objekat.

We have constructed a production and business facility in Šimanovci for the company **JUB**.



JUB ŠIMANOVCI

objekat | facility: 7.500 m²

godina | year of construction: 2015





Za nemačku kompaniju **MUEHLBAUER** izgradili smo proizvodni objekat u Staroj Pazovi.

We have constructed a production facility in Stara Pazova for the German company **MUEHLBAUER**.



MÜHLBAUER STARA PAZOVA

objekat | facility: 5.000 m²

godina | year of construction: 2011



MITAS RUMA

objekat | facility: 4.400 m²
godina | year of construction: 2014





GATARIĆ GROUP ŠIMANOVCI

objekat | facility: 6.800 m²

godina | year of construction: 2009





Učestvovali smo u izgradnji najvećeg logističkog centra u Srbiji međunarodnog trgovinskog lanca **"DELHAIZE"**.

We participated in the construction of the largest logistics center in Serbia for international trade chain **"DELHAIZE"**.



DELHAIZE

STARA PAZOVA

objekat | facility: 80.000 m²
godina | year of construction: 2013/14
Podizvodjač | Subcontractor



Učestvovali smo u izgradnji proizvodno skladišnog objekta **COOPER STANDARD** u Sremskoj Mitrovici.

We participated in the construction of the production and storage facility for **COOPER STANDARD** in Sremska Mitrovica.



COOPER STANDARD

SREMSKA MITROVICA

objekat | facility: 20.000 m²
godina | year of construction: 2013
Podizvodjač | Subcontractor





Učestovali smo u izgradnji šoping centra **BIG CEE** u Indiji.

We participated in the construction of the large shopping center **BIG CEE** in Indija.



FASHION OUTLET PARK INĐIJA

objekat | facility: 25.000 m²
godina | year of construction: 2011/12
Podizvodjač | Subcontractor





Za **HOLLO COMPANY** iz Doroslova smo izgradili modernu farmu svinja.

We have constructed a modern pig farm for the company **HOLLO** from Doroslovo.

HOLLO COMPANY

DOROSLOVO

objekat | facility: 6.200 m²

godina | year of construction: 2019



Firma **BIOENERGO 808** nas je angažovala na izgradnji biogasnog postrojenja.

We were engaged by the company **BIOENERGO 808** for the construction of a biogas plant.

BIOENERGO 808

STARI BANOVCI

kapacitet | capacity: 0.6-0.7 MW
godina | year of construction: 2016





Gradili smo objekte i za mnoge druge klijente:

We have constructed facilities for numerous other clients, such as:

Plamen - Indija, Gas teh - Indija, Meridijan Šped - Šid, Luxury Tannery - Ruma,
Art Invest - Stara Pazova, Motoplast - Nova Pazova, Braća Crnomarković - Zemun,
Reiswolf - Stara Pazova, Elixir - Šabac, Izoterm Plama - Indija, Astaco - Zemun,
Drina Plastika - 86 d.o.o. - Nova pazova, Open Mind - Šimanovci,
Metal-flex - Nova Pazova, Ludan - inženjering, Naftagas...

INDUSTRIJSKE HALE INDUSTRIAL FACILITIES



Pionir u reciklaži
građevinskog
otpada u Srbiji

We are a pioneer
in the recycling
of construction
waste in Serbia

Na svakom gradilištu
posvećujemo
pažnju reciklaži.

At all our construction sites
we are strongly committed
to recycling.

BEZBEDNOST SAFETY

Posvećujemo naročito pažnju ostvarenju bezbednosti i zdravlju na radu.

Also, we are dedicated to safety and protection at work.

TIM TEAM

Naša snaga je u našem timskom duhu.

Our strenght lies in our team spirit.



LETAČ je kompanija koja se u potpunosti oslanja na sopstvene resurse i poseduje veliki broj najsavremenijih građevinskih mašina, alata i dodatne opreme.

LETAČ is a company that relies entirely on its own resources and owns a large number of state-of-the-art construction machines, tools and accessories.

Mi smo pouzdan partner. Razmišljamo o budućnosti jasno, sa vizijom, znanjem i ulaganjem u ljudski potencijal. Negujemo ono navažnije-predanost i odgovornost. **POSTOJIMO TRIDESET GODINA, NA ČVRSTIM TEMELJIMA POVERENJA, POUZDANOSTI I POSVEĆENOSTI POSLU.** Preko 20 projekata godišnje, poštujući zahteve naručioca, kvalitet i rok, "Letač" postavlja standarde i učvršćuje svoju poziciju.

We are reliable partner. We think clearly about future, with vision, knowledge and investment in human potential. We nurture what matters most-commitment and responsibility. **WE EXIST FOR THIRTY YEARS, ON SOLID GROUNDS OF TRUST, RELIABILITY AND COMMITMENT TO WORK.** Over 20 projects per year, while respecting the clients' requirements, the level of quality and deadlines, Letač has set standards and strengthened its position in the market.



ISTRAJNOST PERSISTENCE

**Vredno radimo
i kreativno mislimo,
pratimo viziju klijenta!**

**We work hard and think
creatively, respecting
the client's vision!**

one
hundred
percent

%
0
0
1

klijenata
nas angažuje
ponovo
na novim
projektima!

of our clients
are hiring us
again for new
projects!

www.letac.rs

Kralja Petra I 211 D
22320 Indjija, SERBIA
+381 (0) 22 215 0 666
+381 (0) 22 510 031
info@letac.rs
www.letac.rs

Летач

ГРАЂЕВИНСКО ПРЕДУЗЕЋЕ
CONSTRUCTION COMPANY

